

GERDA® THERMO PREMIUM 60



PARAMETERS

UD	THERMAL INSULATION U _D VALUES FOR INWARD-OPENING REFERENCE DOORS	ALUTHERM 60* DOOR FRAME SOLID DOOR 0,86 W/m²K GLAZED DOOR 1,2 W/m²K	DUOTHERM 60 DOOR FRAME SOLID DOOR 0,94 W/m²K GLAZED DOOR 1,3 W/m²K
RC	ANTI-BURGLARY PROTECTION CLASS		RC2 / RC3**
	LEAF THICKNESS		60 mm
	DOOR SIZES		80, 90N, 90E, 100E*
	DESIGN LINES		4
	LEAF STRUCTURE	WOODEN FRAME + EXPANDED GRAPHITE POLYSTYRENE	

**ALUTHERM 60* DOOR FRAME
SOLID DOOR / GLAZED DOOR**

**DUOTHERM 60 DOOR FRAME
SOLID DOOR / GLAZED DOOR**

$U_D = 0,86 / 1,2 \text{ W/m}^2\text{K}$

$U_D = 0,94 / 1,3 \text{ W/m}^2\text{K}$

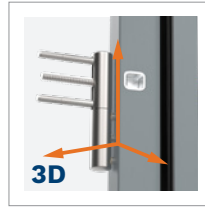
RC2 / RC3**



Vertical bolt*



DUOTHERM 60 door frame



Hinges adjustable in three planes with caps matching fitting's colour



Adjustable pawl hitch



Auxiliary 3-bolt lock



Lower upstand brush seal



Main 3-bolt lock



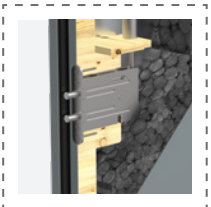
Fixed anti-prizing bolts



Class 5 lock cylinder, single key system (5 keys + installer's keys)



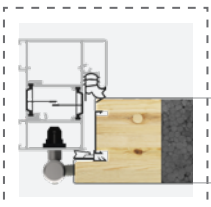
Subthreshold extension*
DUOTHERM 60 – option
ALUTHERM 60 – standard



Auxiliary 2-bolt lock*



GERDA RESIST ULTRA insulation duo tapes*



ALUTHERM 60* door frame



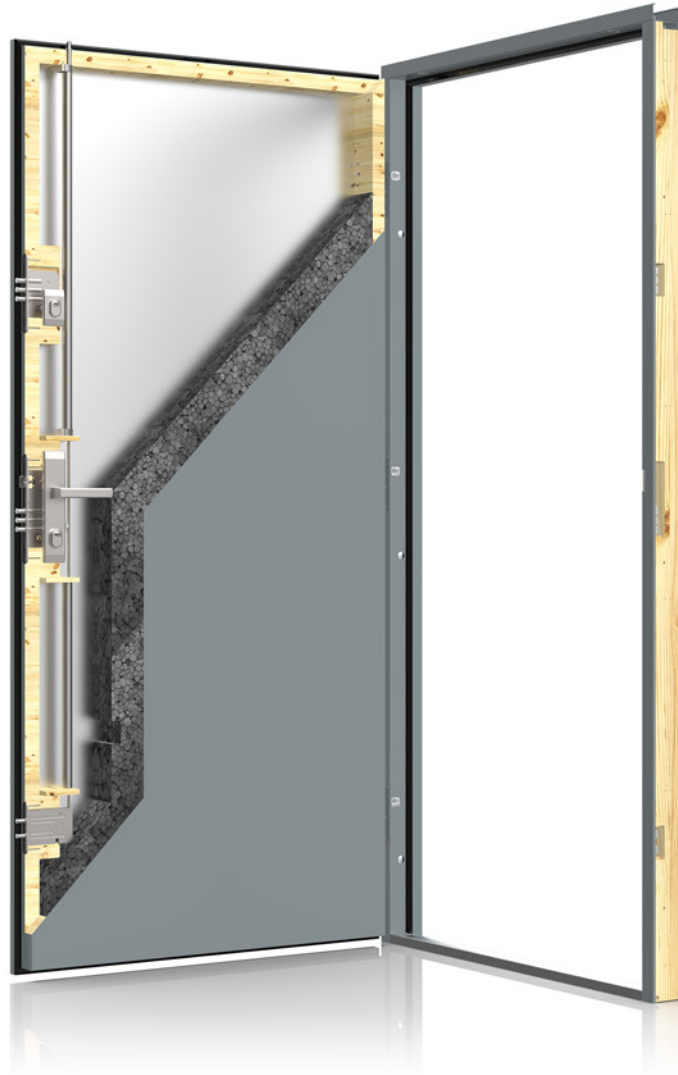
DUOTHERM 60 door frame



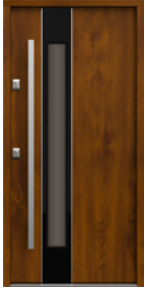
4 sides rebated



Tede lock + tede bridge*



AIR GLASS



AGB LINZ 1 p. 26



AGC LINZ 2 p. 26



AGD LINZ 3 p. 26



AGDB LINZ 3 B p. 26



AGE GRAZ 1 p. 28

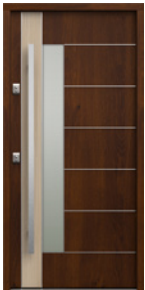


AGF GRAZ 2 p. 28



AGG GRAZ 3 p. 29

QUARDO



KWA PASAWA 1 p. 32



KWB PASAWA 2 p. 32



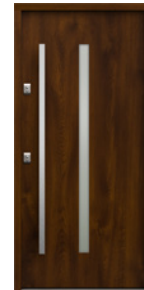
KWC PASAWA 3 p. 33



KWD PASAWA 4 p. 33



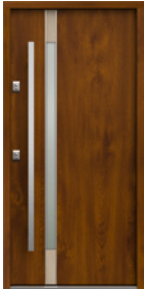
KWE JENA 3 p. 34



KW4 JENA 4 p. 34



KWF BAMBERG 1 p. 36



KWN TREWIR 3 p. 41



KWP TREWIR 4 p. 41



KW7 TREWIR 7 p. 41



KWS DORFEN p. 42



KWT KASSEL 1 p. 44



KWX KASSEL 2 p. 44



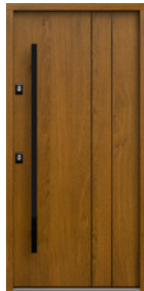
KPN KRONACH 1 p. 46



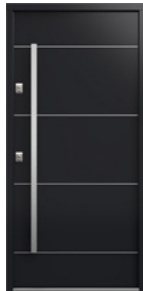
KPM REGEN 5 p. 49



KPR REGEN 6 p. 49



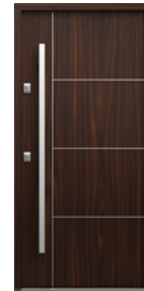
KPRB REGEN 6 B p. 49



KPE DREZNO 1 p. 50



KPF DREZNO 2 p. 50



KPH DREZNO 4 p. 51



KPA ERFURT 1 p. 52

ELITE 3D



ELA BRIG p. 54



ELB OLTEN p. 54



ELC VISP p. 55



ELD TRIN p. 55



ELE BERNO p. 55



NS1 MILANO 8 p. 56



NS2 MILANO 9 p. 56

TEMPO

AIR GLASS



AGGB GRAZ 3 B p. 29



AGA SALZBURG p. 30



AGH VILLACH p. 30



AGHB VILLACH B p. 30

QUARDO



KWG BAMBERG 2 p. 36



KWH BAMBERG 3 p. 37



KWI BAMBERG 4 p. 37



KWJ ULM 1 p. 38



KWK ULM 2 p. 38



KWL TREWIR 1 p. 40



KWM TREWIR 2 p. 40



KPP KRONACH 2 p. 46



KPT KRONACH 3 p. 47



KPZ KRONACH 4 p. 47



KPJ REGEN 1 p. 48



KPK REGEN 2 p. 48



KPL REGEN 3 p. 49



KPS REGEN 4 p. 49



KPB ERFURT 2 p. 52



KPC ERFURT 3 p. 53

TEMPO



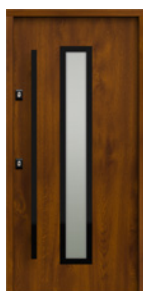
NS3 MILANO 10 p. 57



NS4 MILANO 11 p. 57



NS9B MILANO 12 B p. 57



NSSB HANOVER 5 B p. 58



NS6 HANOVER 6 p. 58



NS7 INNSBRUCK p. 59



W00 PŁASKIE p. 60