



PARAMETERS

UD	THERMAL INSULATION U _D VALUES FOR INWARD-OPENING REFERENCE DOORS	ALUTHERM 60* DOOR FRAME SOLID DOOR 1,0 W/m²K GLAZED DOOR 1,3 W/m²K	PERFOTHERM 60 DOOR FRAME SOLID DOOR 1,1 W/m²K GLAZED DOOR 1,3 W/m²K
RC	ANTI-BURGLARY PROTECTION CLASS	RC2 / RC3**	
	LEAF THICKNESS	60 mm	
	DOOR SIZES	80N, 80, 90N, 90E, 100E*	
	DESIGN LINES	2	
	LEAF STRUCTURE	WOODEN FRAME + EXPANDED GRAPHITE POLYSTYRENE	

**ALUTHERM 60* DOOR FRAME
SOLID DOOR / GLAZED DOOR**

**PERFOTHERM 60 DOOR FRAME
SOLID DOOR / GLAZED DOOR**

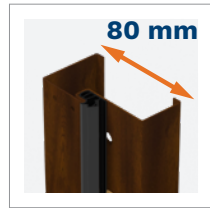
$U_D = 1,0 / 1,3 \text{ W/m}^2\text{K}$

$U_D = 1,1 / 1,3 \text{ W/m}^2\text{K}$

RC2 / RC3**



Vertical bolt*



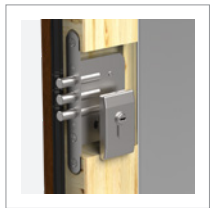
PERFOTHERM 60 door frame



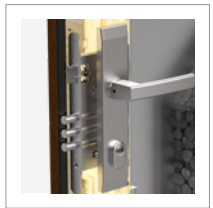
Hinges adjustable in two planes with caps matching fitting's colour



Adjustable pawl hitch



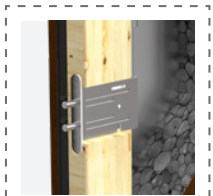
Auxiliary 3-bolt lock



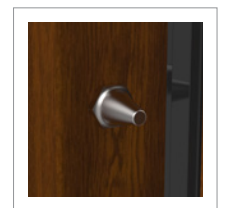
Main 3-bolt lock



Class 5 lock cylinder, single key system (5 keys + installer's keys)



Auxiliary 2-bolt lock*



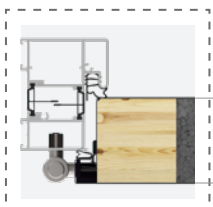
Fixed anti-prizing bolts



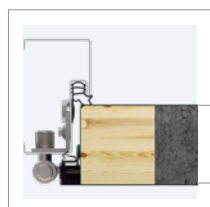
Subthreshold extension*
PERFOTHERM 60 – option
ALUTHERM 60 – standard



GERDA RESIST ULTRA insulation duo tapes*



ALUTHERM 60* door frame



PERFOTHERM 60 door frame



3 sides rebated



Tedee lock + tedee bridge*

TEMPO



NS1 MILANO 8 p. 56



NS2 MILANO 9 p. 56



NS3 MILANO 10 p. 57



NS4 MILANO 11 p. 57



NS9 MILANO 12 p. 57



NS9B MILANO 12 B p. 57



NS5 HANOVER 5 p. 58



NT1 TURYN 1 p. 64



NT2 TURYN 2 p. 65



SOJ BERGAMO 2 p. 66



SJ9 NICEA 9 p. 66



SBE BERLIN 4 p. 67



ST4 UPPSALA 1 p. 68



ST4A UPPSALA 1A p. 68



ST9 LUND 1 p. 72



WBA ASPEN 1 p. 73



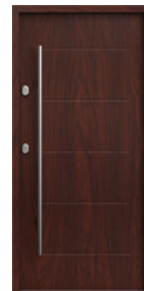
TN7 ASPEN 2 p. 73



TN7B ASPEN 2B p. 73



SR3 TROMSO 1 p. 74



SR4 TROMSO 1 p. 74



SR5 TROMSO 2 p. 75

CLASSIC



W76 MODENA p. 76



W77 MODENA 2 p. 76



W78 MODENA 3 p. 77



WDR RAVENA p. 77



WJ1 NICEA 5 p. 78



W23 OLYMPIA p. 79



W91 WERONA p. 80



W24 LIZBONA p. 82



W9N WENECJA p. 82



W13 LONDYN p. 83



W5L LONDYN 1 p. 83



W54 BARCELONA p. 84



W53 BARCELONA 1 p. 84



G76 GENEWA 1 p. 85

TEMPO



NS5B HANOVER 5 B p. 58



NS6 HANOVER 6 p. 58



NS7 INNSBRUCK p. 59



W00 PLAIN p. 60



W00 PLAIN p. 60



SNU MILANO 4 p. 62



SNUA MILANO 4A p. 62



TML TOKIO 1 p. 70



TMLA TOKIO 1A p. 70



TMM TOKIO 2 p. 71



TMMa TOKIO 2A p. 71



ST8 RYGA p. 72



SR5 TROMSO 2 p. 75

CLASSIC



W94 WERONA 1 p. 80



W93 WERONA 3 p. 81



W6A WERONA 4 p. 81



WQA WERONA 5 p. 81



G75 GENEWA 2 p. 85



D75 GENEWA 3 p. 85